

Firmwareupdate and RF-channel Compactus® Dynamic II



To update the firmware of a Compactus® Dynamic II installation, please follow the steps as described below! **Turn off all Dynamic II installations in the surrounding area of the Dynamic II installation when you are upgrading!**

During the updates the following UI screens will appear or the screen will go to black. No interaction is needed, just follow the steps below.



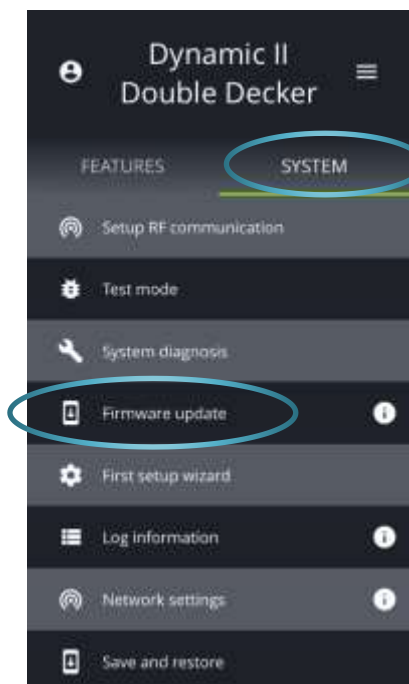
1. Install all Dynamic II components and configure the installation using the Dynamic II app before proceeding with the next steps.
2. Insert an USB-stick with the firmware files in the System Control Unit (SCU).



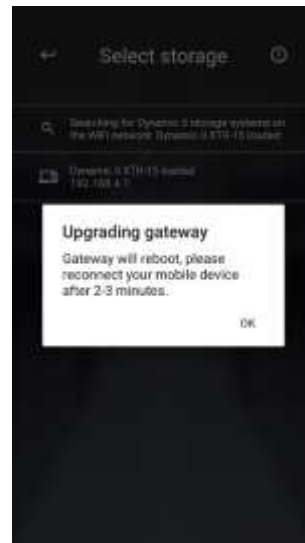
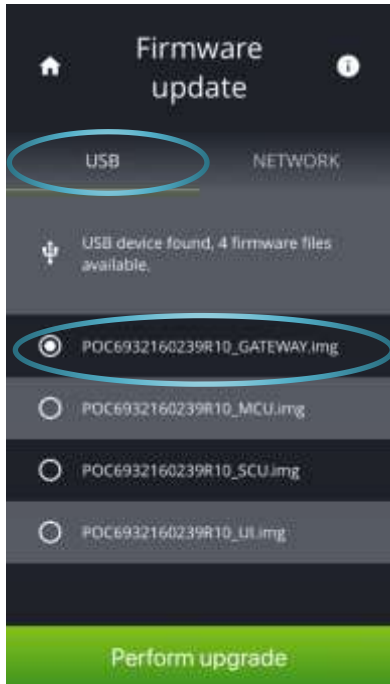
The SCU is located behind the front panel in the static cabinet or first mobile cabinet if there is no static one. This could be on the left or right side depending on which side the main power enters.

Tip: Look where the antenna is located!

3. Connect with your mobile device to the Wi-Fi of the installation, open the Dynamic II app and log in as service.
4. Go to 'System' and select 'Firmware update'.

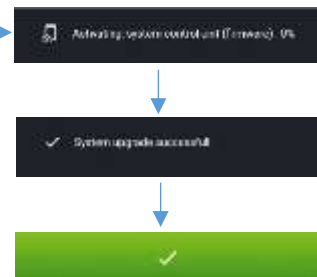
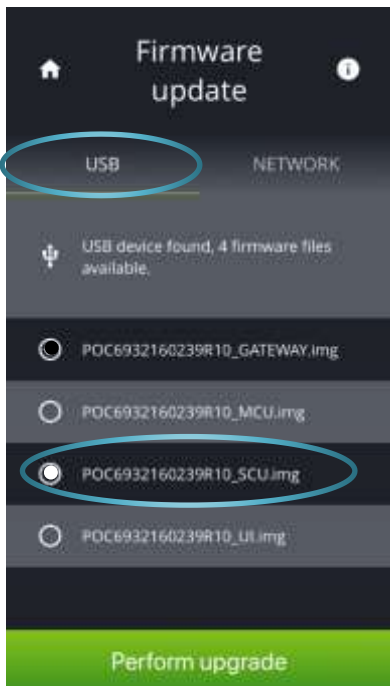


5. Select 'USB' and select the firmware file for the gateway: 'POC6932160239R17_1_GATEWAY.img'. If there are no files visible on the USB device, check the file extension. See also Appendix A.



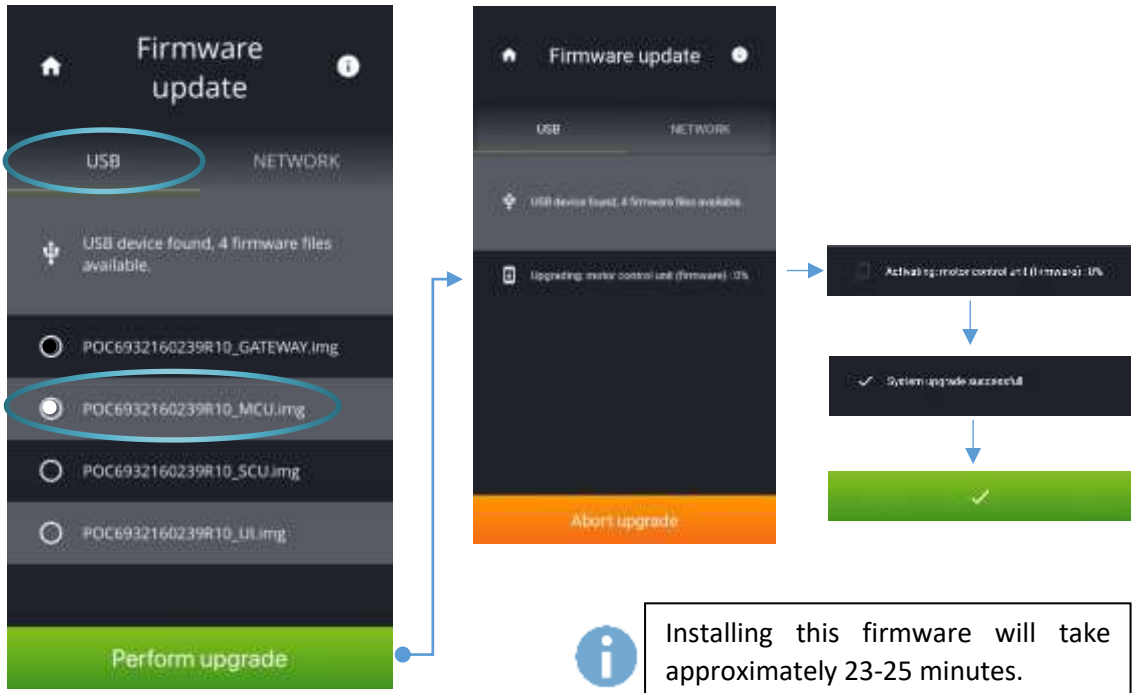
Installing this firmware will take approximately 2-3 minutes.

6. After the firmware file has been installed, connection to the system is lost. → **Reconnect to the Wi-Fi of the installation!**
7. Repeat step 2. and 3. → wait until synchronizing is finished!
8. Select 'USB' and select the firmware file for the SCU: 'POC6932160239R17_2_SCU.img'.

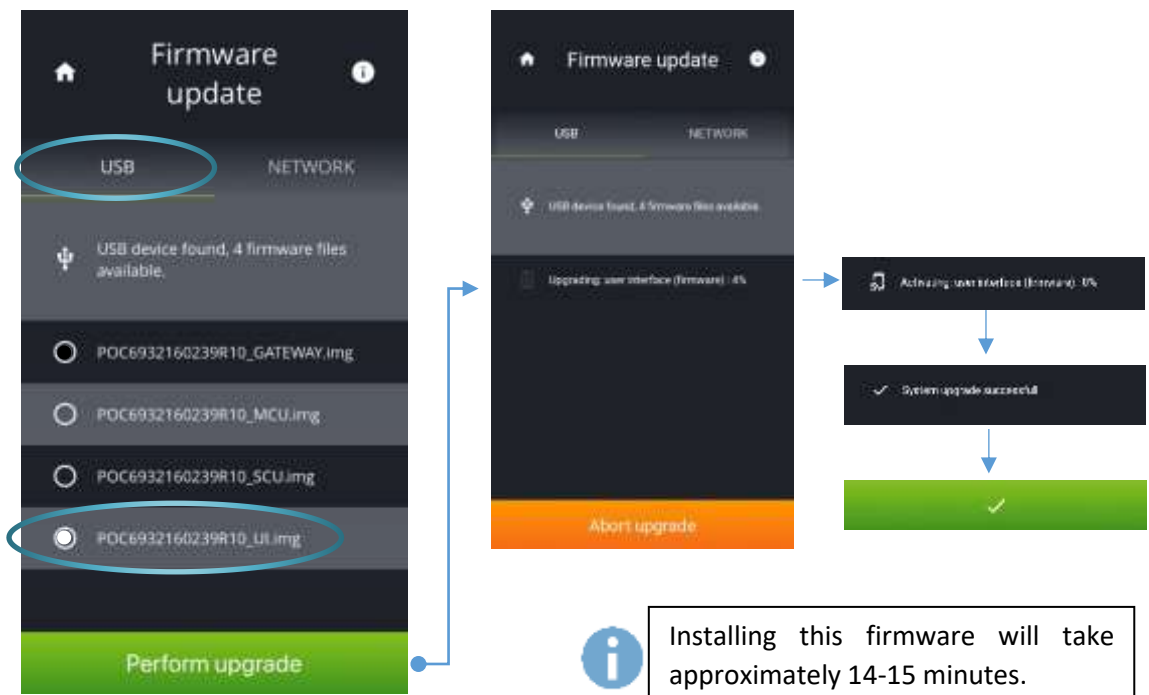


Installing this firmware will take approximately 6-7 minutes.

9. Check by selecting 'System' and 'Log information' if the update was successful. The logs should mention 'SCU firmware activated', if not repeat step 8.
10. Select 'USB' and select the firmware file for the MCU: 'POC6932160239R17_4_MCU.img'



11. Check by selecting 'System' and 'Log information' if the update was successful. The logs should mention 'MCU firmware activated', if not repeat step 10. Also repeat this step if the app shows 'Mixed firmware versions for MCU'.
12. Select 'USB' and select the firmware file for the UI: 'POC6932160239R17_2_UI.img'.



13. Check by selecting 'System' and 'Log information' if the update was successful. The logs should mention 'UI firmware activated', if not repeat step 12. Also repeat this step if the app shows 'Mixed firmware versions for UI'.

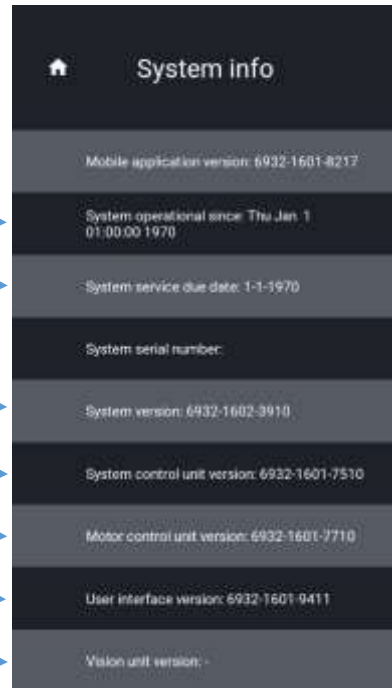
14. Only if you have Safety Masters: Select 'USB' and select the firmware file for the UI: 'POC6932160239R15_VU.img'.
15. Check by selecting 'System' and 'Log information' if the update was successful. The logs should mention 'Safety Master firmware activated', if not repeat step 14. Also repeat this step if the app shows 'Mixed firmware versions for Safety Master'.
16. Check if all firmware updates are correctly installed.

Go to the column 'System' and select 'System info'.

- a) Here you can check if the correct firmware versions are installed.
- b) Check installation & service date

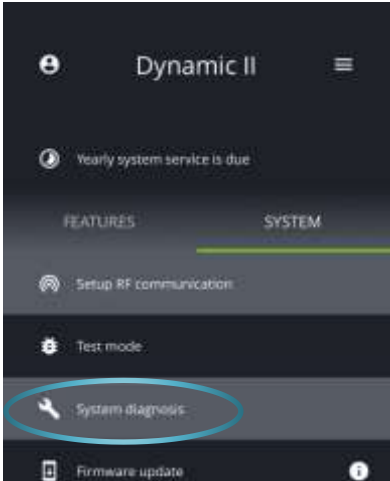
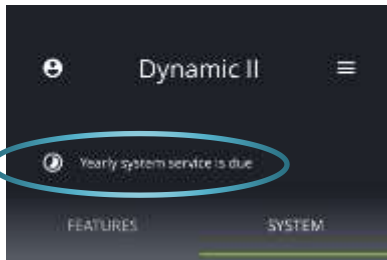
System operational since & System service due date:
If date is not the correct / actual installation date → proceed with step 17-19.

System version: 6932-1602-3917
System control unit version: 6932-1601-7517
Motor control unit version: 6932-1601-7717
User interface version: 6932-1601-9417
Safety Master version: 6932-1603-0402



17. Installation Instructions – Set service date and installation date


After upgrading from R06 the service and installation date should be set. Note that “Yearly system service is due” is shown at the top:



Set the installation date:

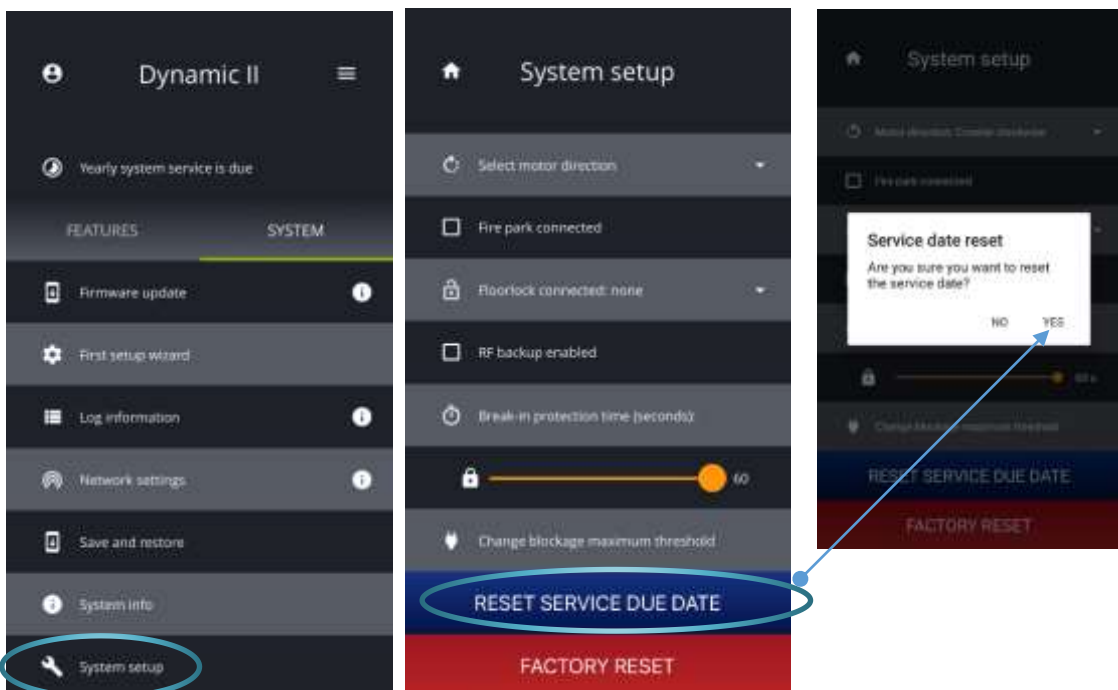
The installation date can be set as follows in the mobile app:

1. under tab *System* open the System Diagnostics page

 As the installation date was not set yet, just opening the page is sufficient (no further action is required here).

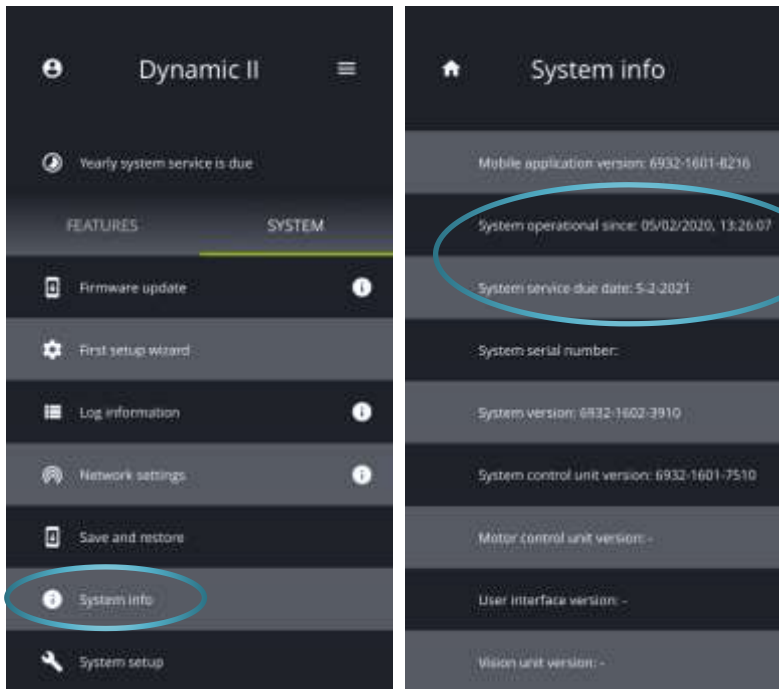
18. Set the service date

The service date can be set as follows in the mobile app: under tab *System* open the *System setup* page. In the system setup, press the button “Reset service due date”. This will set the service date to the current date plus 1 year:



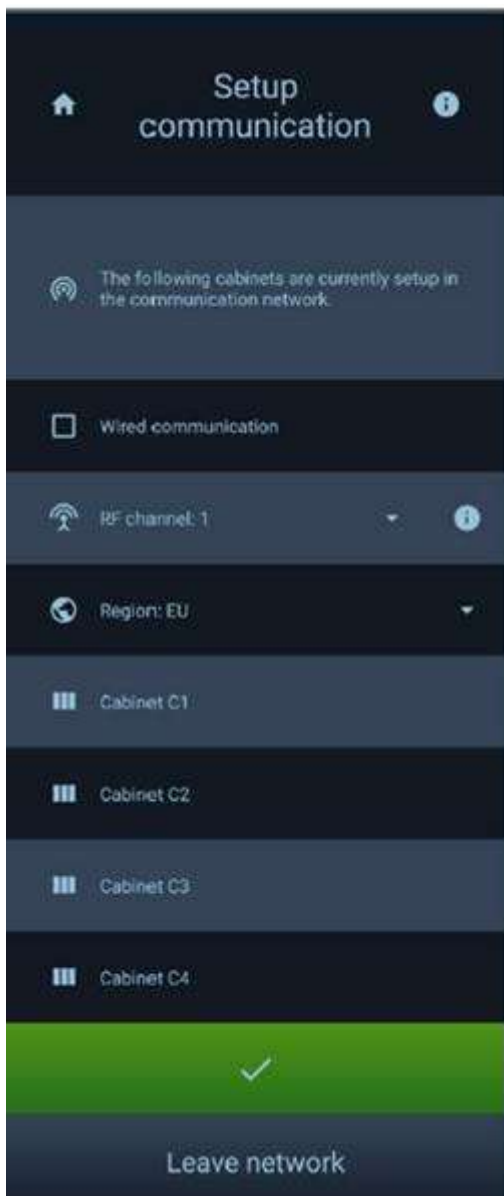
19. Verify the installation and service date

To check if the previous steps were done correctly, open the *System info* page:



20. After you have updated the installation with new software, each installation has to be set to a different RF-channel if the installation has wireless communication.

1. This is only possible with the latest release (15-01-2021) of the Dynamic II app.
2. Go to 'System' and select 'Setup communication'.
3. Here you can set the RF-channel. Please check the picture below.
4. Set each installation to a different RF-channel:
 - a. There are 16 channels available
 - b. Spread the installations over the available channels: if you have 3 installations, do not choose 1, 2 and 3 but choose 1, 8 and 16 instead.
 - c. Confirm this new setting.
5. Now the installation is set to a preferred RF-channel. This will make it less likely that installations close to each other will disturb each other.



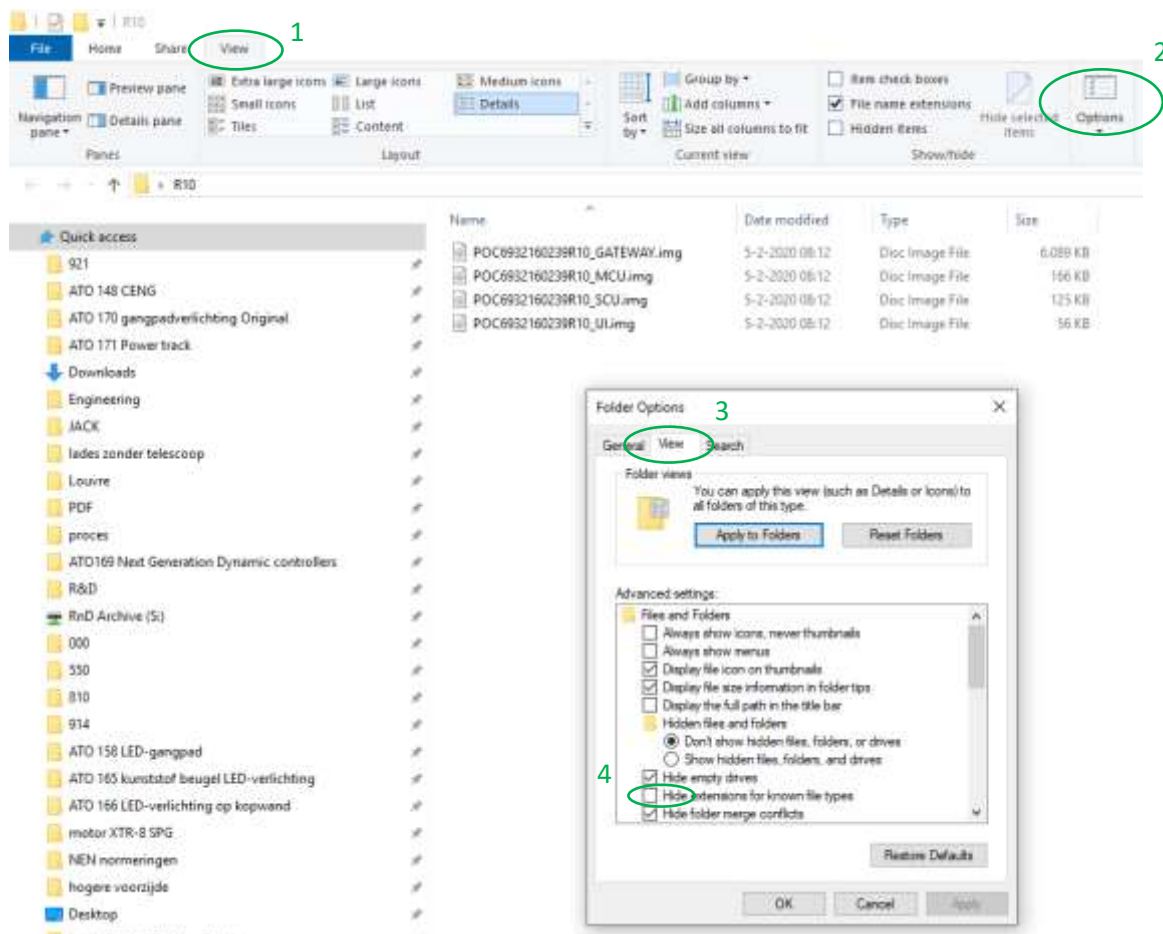
21. After you have updated the software and set the RF-channel, you should turn off the power of the installation and proceed with the next installation.

Appendix A: Change the file extension .IMG to .img.

When copying a file, the extension can change from small (.img) to capital letters (.IMG). The Dynamic II system only recognizes the files if they are in small letters. So beware when putting these files on USB-sticks and when distributing these files further that the file extension is correct.

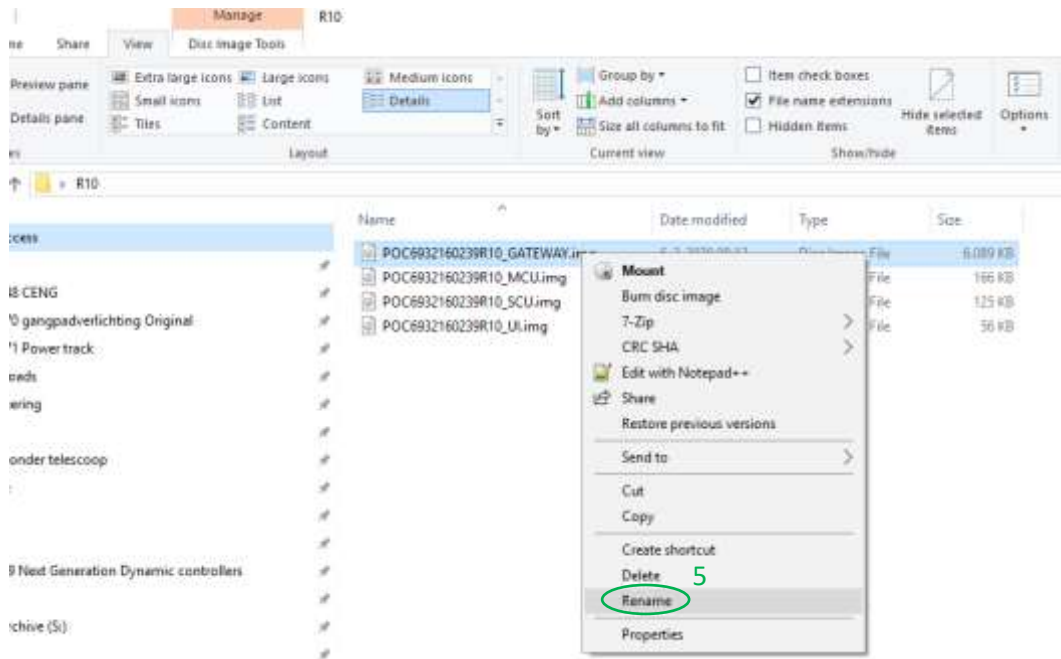
Here is a step-by-step manual to change the file extension from .IMG to .img

- Open the files in Windows explorer.
- Go to the tab 'View' (Step 1 in the picture below), select 'Options' (2).
- Now the window 'Folder options' pops up.
- Select in this window the tab 'View' (3) and deselect 'Hide extensions for known file types' (4).



Firmwareupdate and RF-channel Compactus® Dynamic II

- Now the extension is visible and you can change the extension by changing the name (5).
- Change the extension from .IMG to .img .



- Make sure that you do not accidentally change the extension to .IMG by copying or moving the files.
- Make sure your USB-stick is formatted according to FAT32.